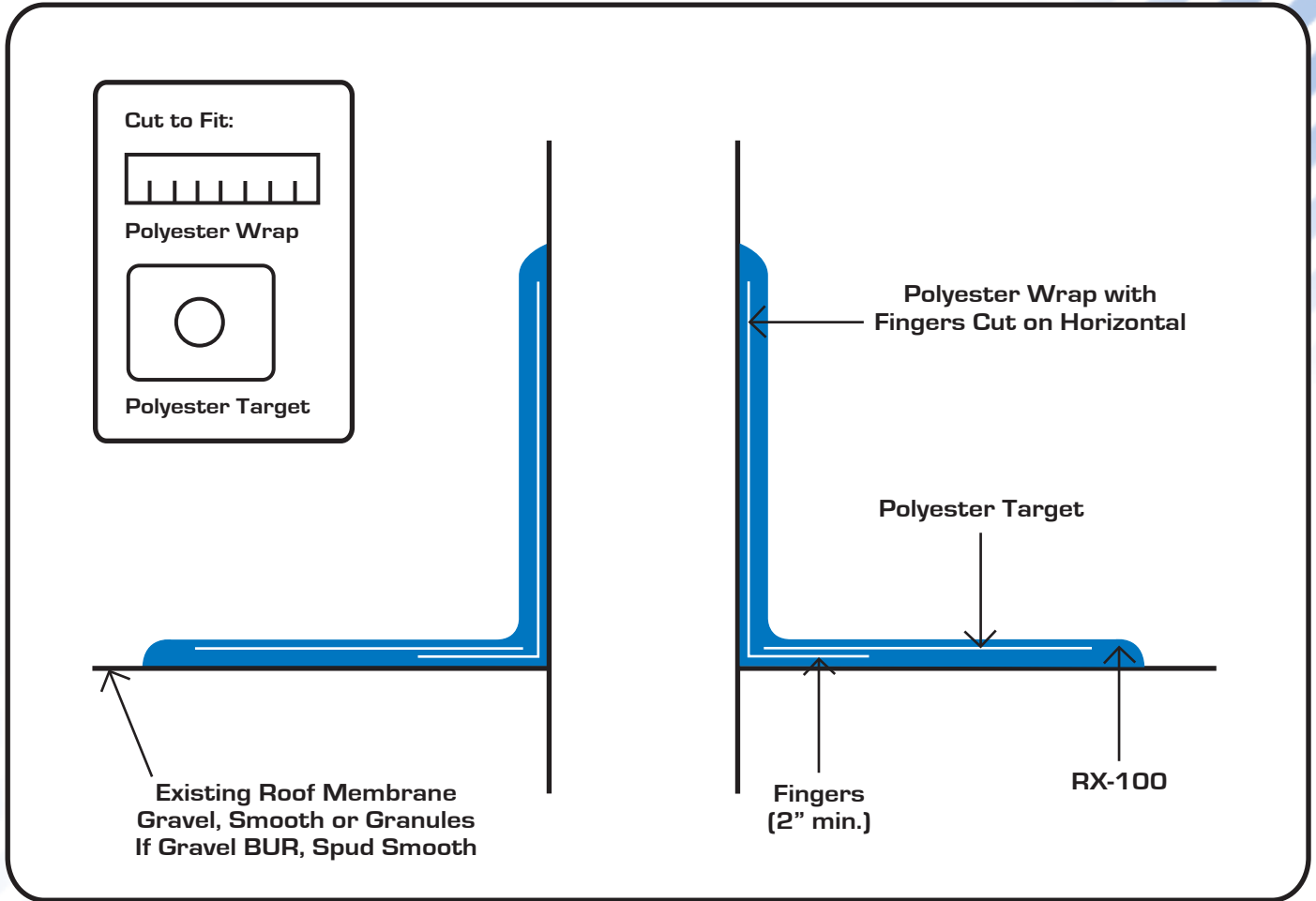


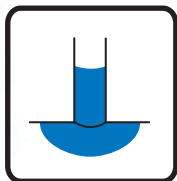
DETAILS



Pipe Wrap	BUR 9
-----------	-------

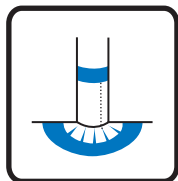
NOTE:

Step 1



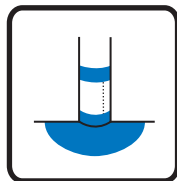
Apply RX-100 to pipe and roof.

Step 2



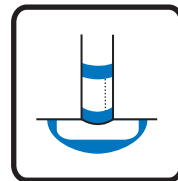
Embed polyester wrap in RX-100 while still wet.

Step 3



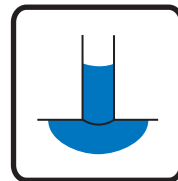
Apply RX-100 to base of pipe and roof.

Step 4



Embed polyester target in RX-100 while still wet.

Step 5



Coat all polyester with RX-100