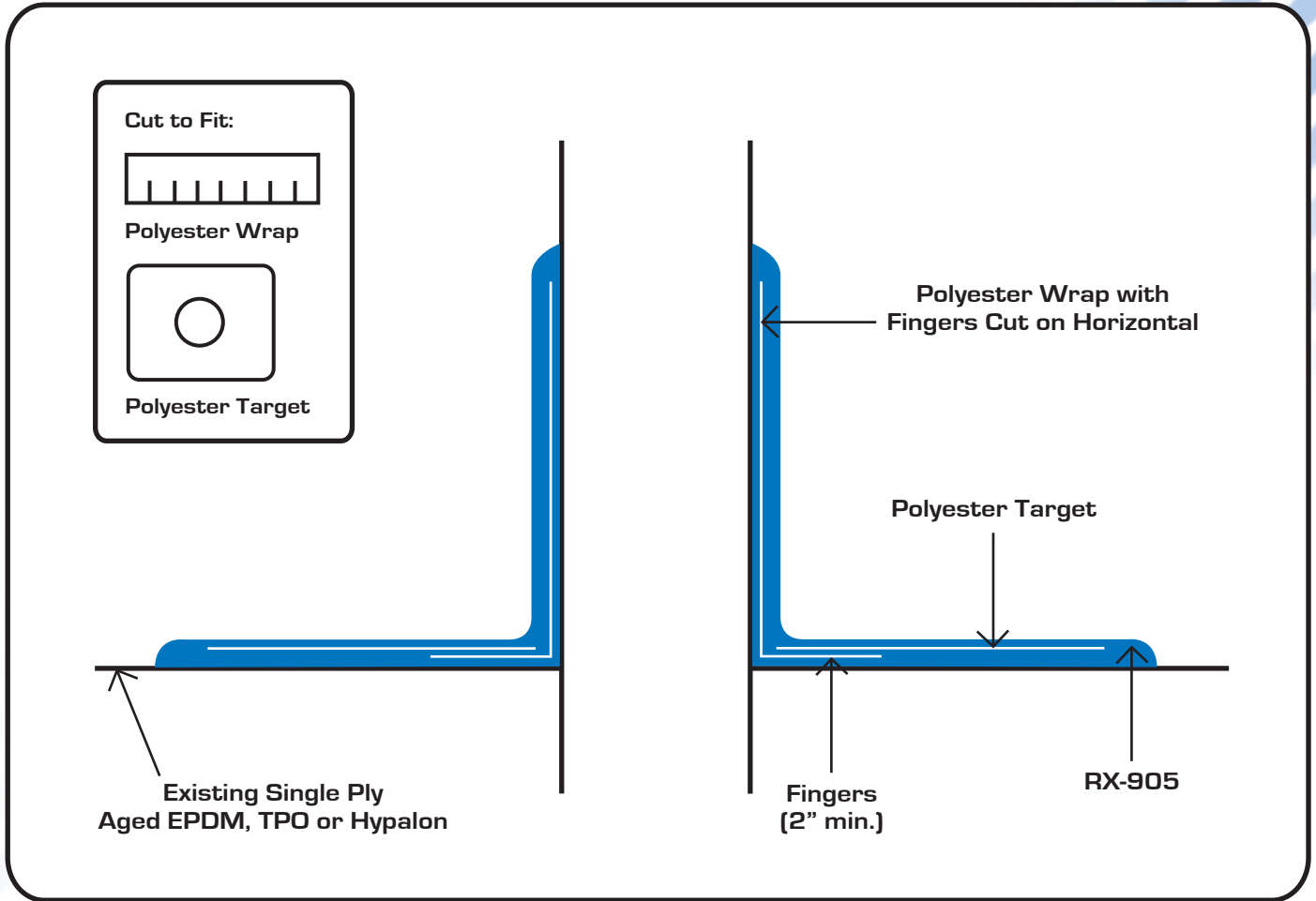


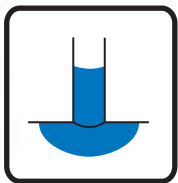
DETAILS



Pipe Wrap	Single Ply 3
-----------	--------------

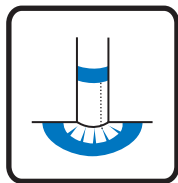
NOTE:

Step 1



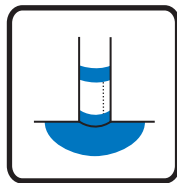
Apply RX-905 to pipe and roof.

Step 2



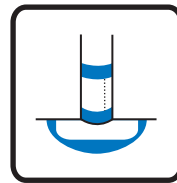
Embed polyester wrap in RX-905 while still wet.

Step 3



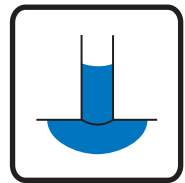
Apply RX-905 to base of pipe and roof.

Step 4



Embed polyester target in RX-905 while still wet.

Step 5



Coat all polyester with RX-905